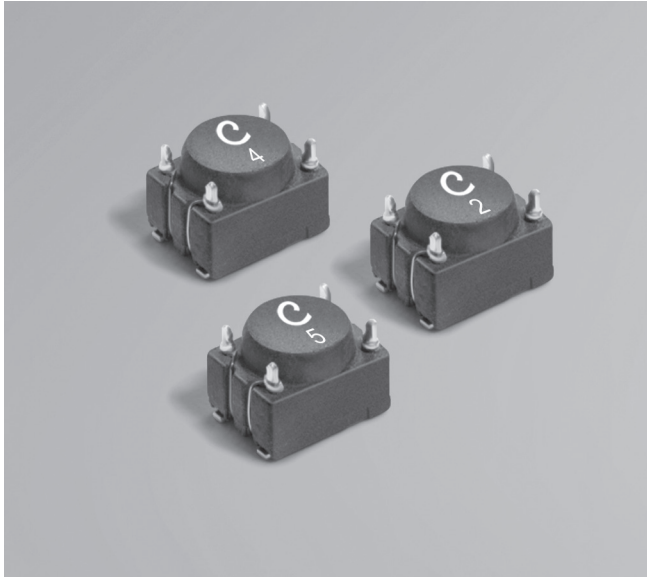


SMT Data Line EMI Filters DFT4532



- Current-compensated ring core double choke
- Miniature footprint; less than 3.2 mm tall
- Exceptional common mode noise attenuation
- AEC-Q200 qualified
- 250 Vrms, one minute isolation (hipot) between windings

Core material Ferrite
Environmental RoHS compliant
Terminations RoHS compliant matte tin over nickel over phos-bronze
Weight 78 – 86 mg
Ambient temperature -40°C to +85°C with Irms current
Maximum part temperature +105°C (ambient + temp rise)
Storage temperature Component: -40°C to +105°C.
 Tape and reel packaging: -40°C to +80°C
Resistance to soldering heat Max three 40 second reflows at +260°C, parts cooled to room temperature between cycles
Moisture Sensitivity Level (MSL) 1 (unlimited floor life at <30°C / 85% relative humidity)
Packaging 600/7" reel; 2000/13" reel Plastic tape: 12 mm wide, 0.4 mm thick, 8 mm pocket spacing, 3.43 mm pocket depth
PCB washing Tested to MIL-STD-202 Method 215 plus an additional aqueous wash. See [Doc787_PCB_Washing.pdf](#).

Part number ¹	Common mode impedance max (kOhms)	Cutoff frequency ² (MHz)	Inductance ³ (mH)		Test frequency (kHz)	Irms ⁴ (mA)	DCR (Ohms) ⁵		Leakage inductance max (µH)	Value Marking
			nom	min			nom	max		
DFT4532-513BL_	2.01 @ 61 MHz	670	0.051	0.0357	100	370	0.250	0.320	0.100	5
DFT4532-513SL_	1.92 @ 99 MHz	28	0.051	0.0357	100	370	0.250	0.320	1.600	6
DFT4532-104BL_	0.64 @ 9.7 MHz	900	0.100	0.070	100	500	0.150	0.200	0.070	1
DFT4532-224BL_	1.40 @ 13 MHz	650	0.220	0.154	100	400	0.200	0.270	0.080	2
DFT4532-334BL_	1.96 @ 9.6 MHz	520	0.330	0.231	100	370	0.250	0.320	0.100	3
DFT4532-474BL_	3.04 @ 9.6 MHz	490	0.470	0.329	100	350	0.320	0.380	0.130	4

1. When ordering, please specify **termination** and **packaging** code:

DFT4532-474BLC

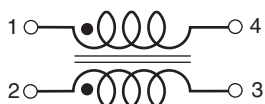
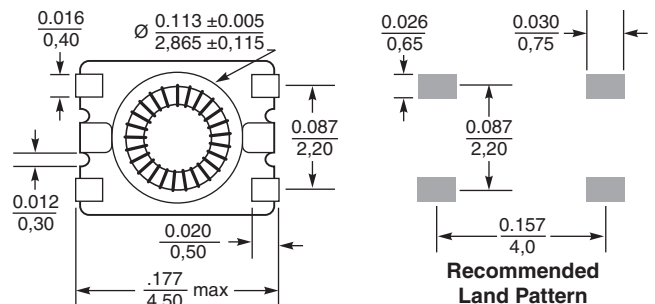
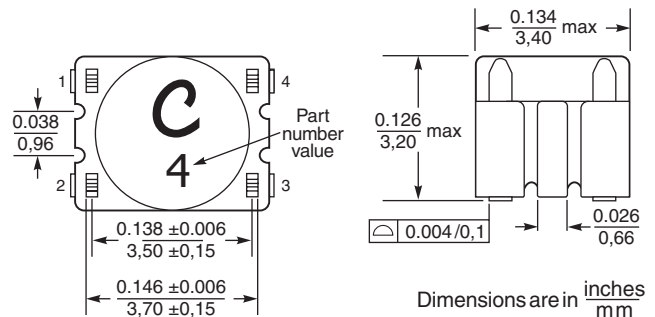
Termination: L = RoHS compliant matte tin over nickel over phosph-bronze

Special order, add cost: S = non-RoHS tin-lead (63/37)

Packaging: C = 7" machine-ready reel. EIA-481 embossed plastic tape (600 parts per full reel). Quantities less than full reel available: in tape (not machine ready) or with leader and trailer (\$25 charge)

D = 13" machine-ready reel. EIA-481 embossed plastic tape. Factory order only, not stocked (2000 parts per full reel).

2. Frequency at which the differential mode attenuation equals 3 dB
 3. Inductance is for each winding, measured at test frequency using a Volttech AT3600 or equivalent.
 4. Current that causes a 20°C temperature rise from 25°C ambient.
 5. DCR is specified per winding.
- Refer to Doc 362 "Soldering Surface Mount Components" before soldering.



Dimensions are in inches mm

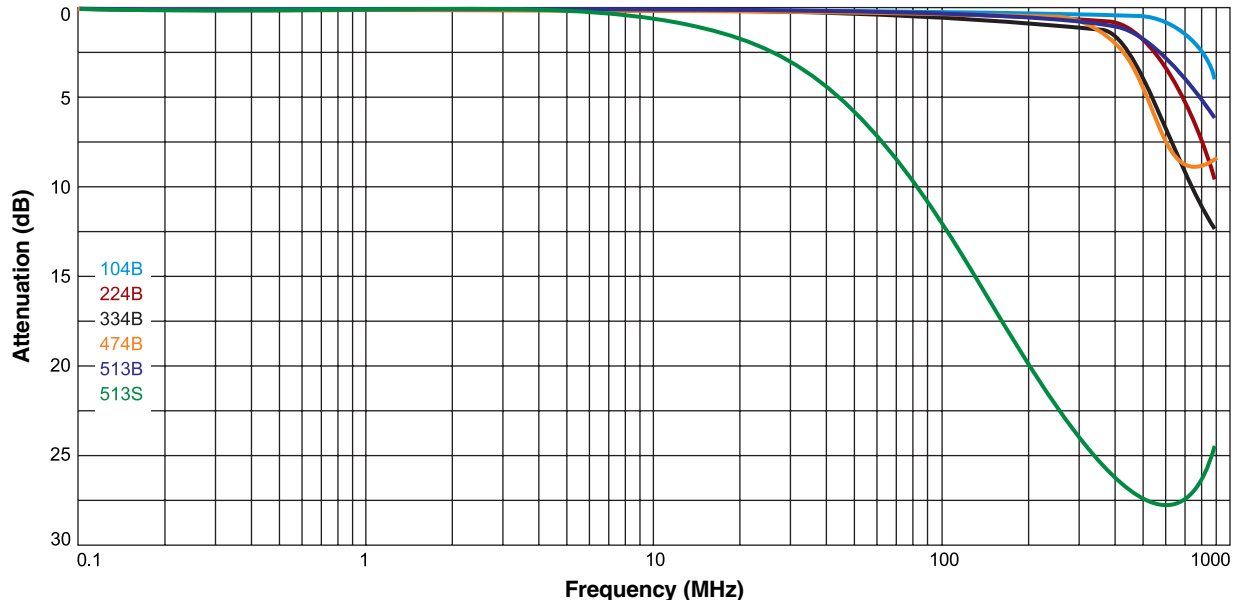
Recommended Land Pattern



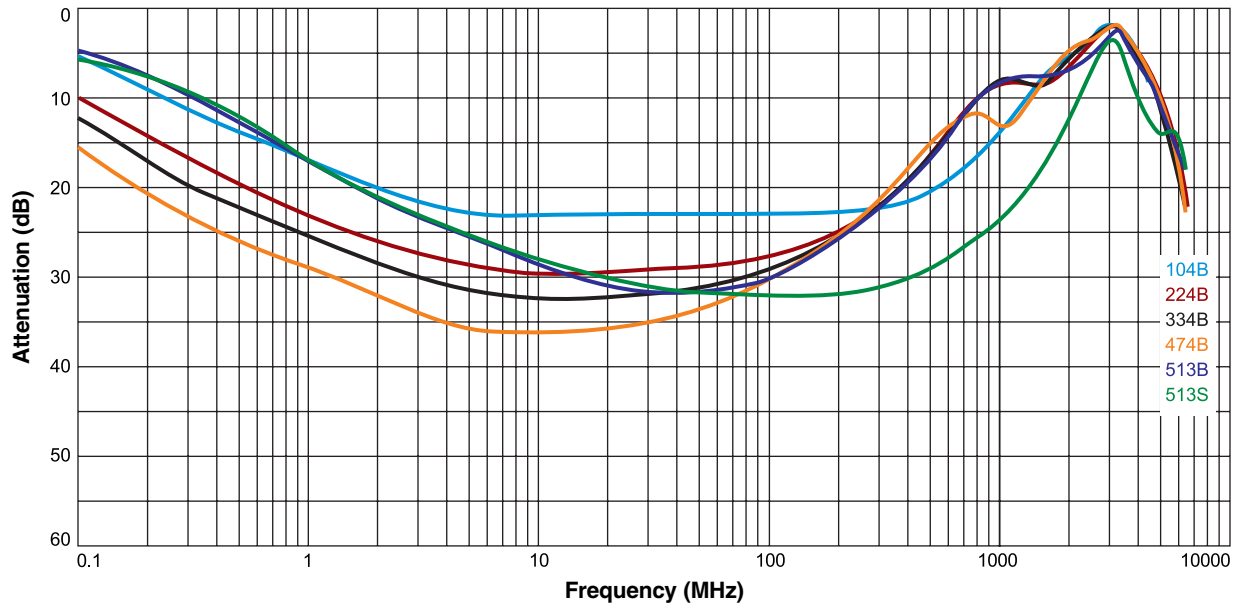
SMT Data Line EMI Filters – DFT4532

Attenuation vs Frequency

Differential Mode



Common Mode



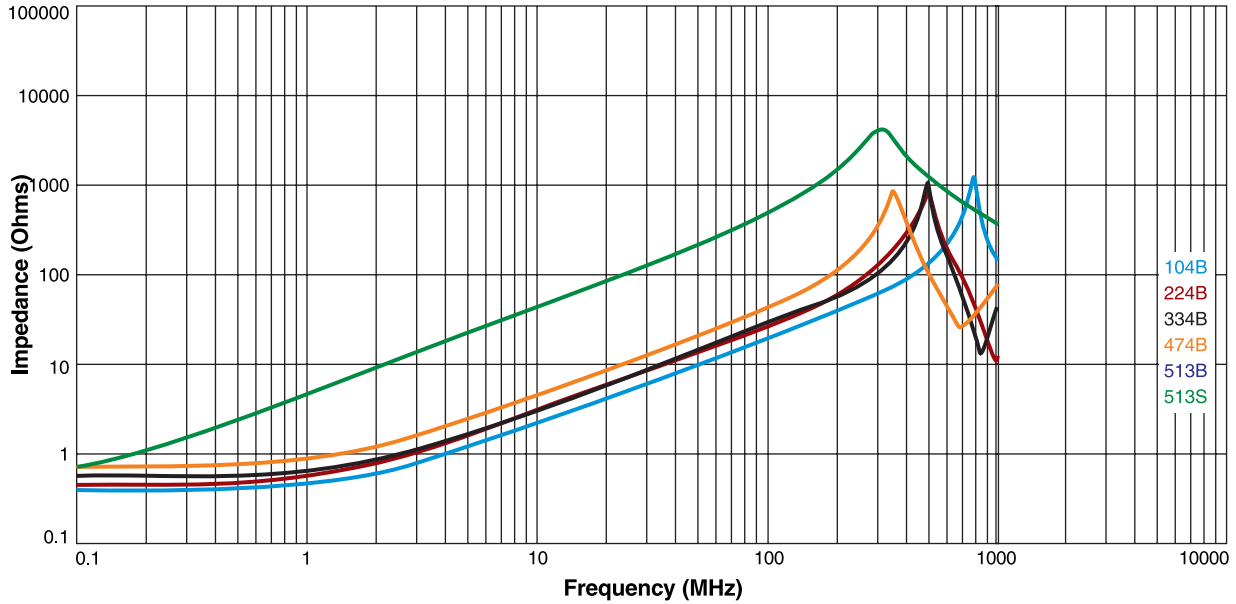
US +1-847-639-6400 sales@coilcraft.com
UK +44-1236-730595 sales@coilcraft-europe.com
Taiwan +886-2-2264 3646 sales@coilcraft.com.tw
China +86-21-6218 8074 sales@coilcraft.com.cn
Singapore + 65-6484 8412 sales@coilcraft.com.sg



SMT Data Line EMI Filters – DFT4532

Impedance vs Frequency

Differential Mode



Common Mode

