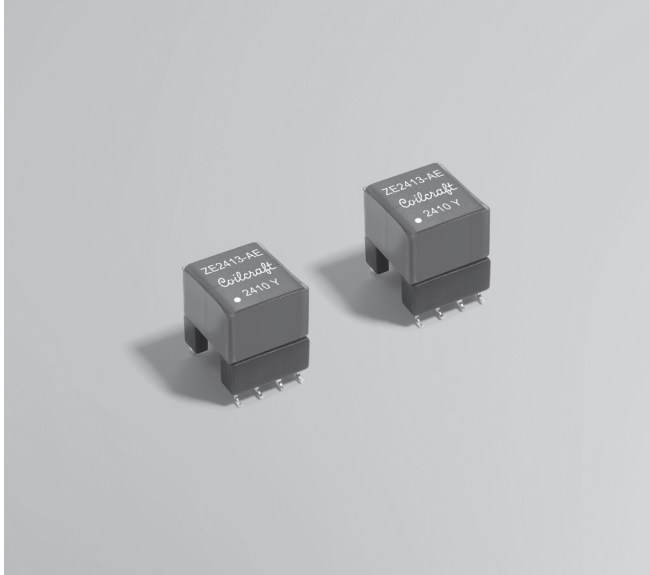


NEW!

Isolated Buck Transformer ZE2413-AE



- Optimized for STMicroelectronics automotive Iso-Buck converter A6986I and L6986I
- Compact footprint, only 11.7 x 10 mm
- Suitable for automotive isolated IGBT/SiC gate driver, On-board charger for HEV/EV, Electric Traction Systems, and similar applications
- 3300 Vrms, one minute isolation (hipot) from primary to secondary
- AEC-Q200 qualified

Core material Ferrite

Terminations RoHS tin-silver over tin over nickel over phos bronze.

Weight 2.4 – 2.7 g

Ambient temperature –40°C to +125°C

Max part temperature +165°C

Storage temperature Component: –40°C to +125°C.

Tape and reel packaging: –40°C to +80°C

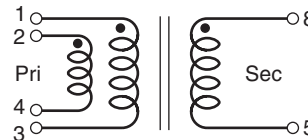
Resistance to soldering heat Max three 40 second reflows at +260°C, parts cooled to room temperature between cycles

Moisture Sensitivity Level (MSL) 1 (unlimited floor life at <30°C / 85% relative humidity)

PCB washing Tested with pure water or alcohol only. For other solvents, see [Doc787_PCB_Washing.pdf](#)

Part number ¹	Inductance at 0 Adc ±10% (µH)	Inductance at 2 Adc ² min (µH)	Isat ³ (A)	DCR max (Ohms)		Leakage Inductance ⁴ max (µH)	Turns ratio pri : sec	Isolation ⁵ (Vrms)	Output
				pri	sec				
ZE2413-AED	18	14	2.6	0.056	0.352	0.18	1 : 2	3300	8 V, 0.20 A

- Packaging:** D = 13" machine-ready reel. EIA-481 embossed plastic tape (200 per full reel). Quantities less than full reel available: in tape (not machine ready) or with leader and trailer (\$25 charge).
 - Inductance is for the primary, measured at 400 kHz, 0.2 Vrms, 2 Adc.
 - DC current that causes the primary inductance to drop 30% from its value without current.
 - Leakage Inductance is for the primary, measured at 400 kHz, 0.2 Vrms with secondary windings shorted together.
 - 3300 Vrms, one minute isolation (hipot) measured between primary and secondary.
 - Electrical specifications at 25°C.
- Refer to Doc 362 "Soldering Surface Mount Components" before soldering.

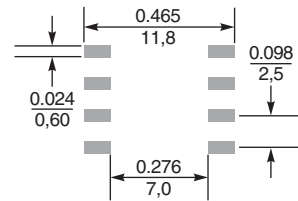
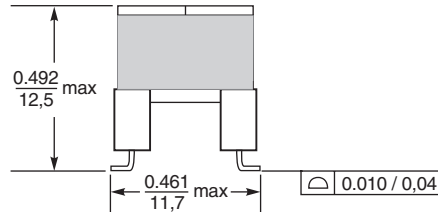
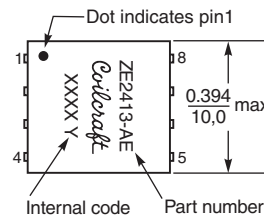
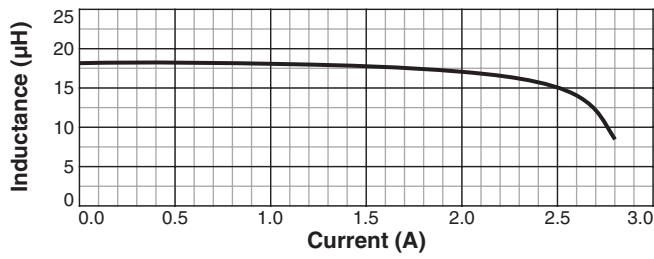


Connect pins 1, 2 and 3,4 to the PC board



ZE2413-AE Series

L vs Current



Recommended Land Pattern

Dimensions are in $\frac{\text{inches}}{\text{mm}}$

Packaging 200/13" reel Plastic tape: 16 mm wide, 0.3 mm thick, 12 mm pocket spacing, 4.3 mm pocket depth



US +1-847-639-6400 sales@coilcraft.com
UK +44-1236-730595 sales@coilcraft-europe.com
Taiwan +886-2-2264 3646 sales@coilcraft.com.tw
China +86-21-6218 8074 sales@coilcraft.com.cn
Singapore + 65-6484 8412 sales@coilcraft.com.sg

Document 1829-2 Revised 10/18/24
 © Coilcraft Inc. 2024
 This product may not be used in medical or high risk applications without prior Coilcraft approval. Specification subject to change without notice. Please check web site for latest information.