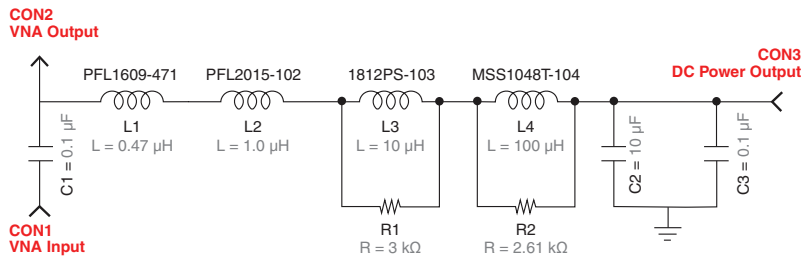


# PoC Filter Solution – SMD-POC-070

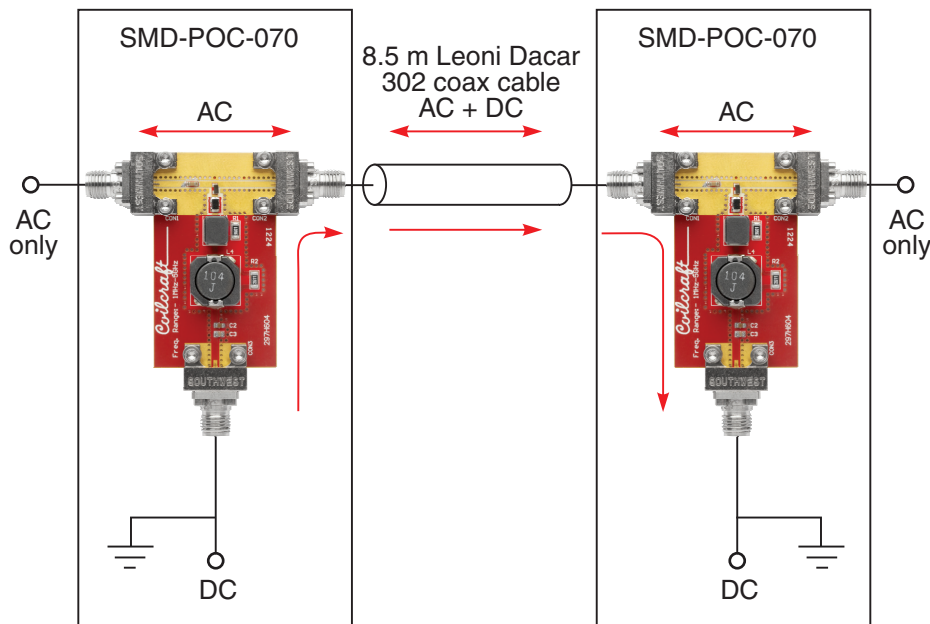
- PoC solution for 1 MHz – 5.4 GHz applications
- Designed specifically for 4, 6, and 10.8 Gbps chipsets
- 125°C ambient applications: 700 mA
- 105°C ambient applications: 850 mA
- 85°C ambient applications: 950 mA

Inductors	DCR max. (Ohms)	Max. Area (mm <sup>2</sup> )	Isat (A) 30%				Irms (A)			
			25°C	85°C	105°C	125°C	25°C	85°C	105°C	125°C
PFL1609-471 (0.47 µH)	0.10	0.72	1.10	0.95	0.84	0.74	1.20	1.15	0.98	0.74
PFL2015-102 (1.0 µH)	0.13	3.19	1.40	1.10	0.95	0.84	1.20	1.10	0.92	0.70
1812PS-103 (10 µH)	0.17	8.81	1.00	0.92	0.88	0.80	1.70	1.53	1.18	0.88
MSS1048T-104 (10 µH)	0.224	108.15	1.40	1.20	1.10	1.00	1.48	1.40	1.30	1.26
<b>Totals:</b>	<b>0.624</b>	<b>120.87</b>								

## Schematic



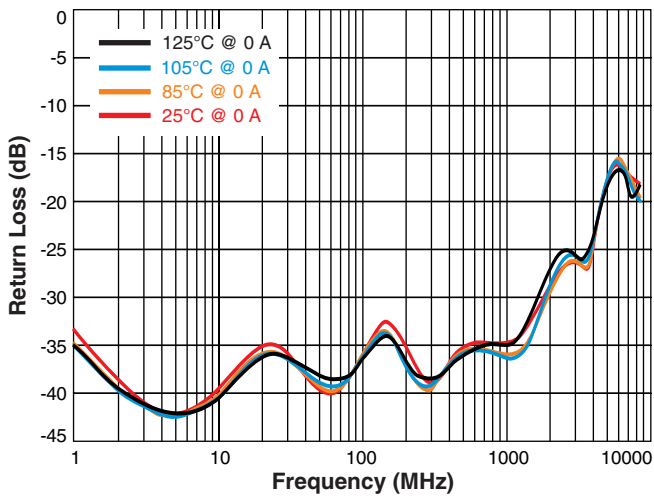
## Total Channel Test Setup



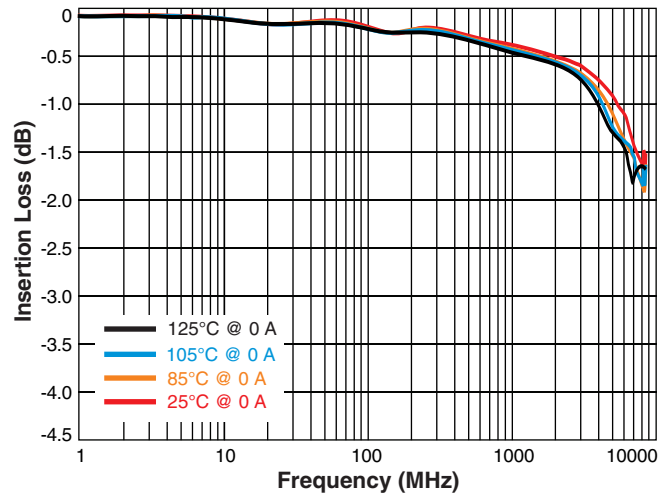
\* Solutions measured in a total channel configuration. 2 PCB's with PoC filters on each with a 8.5 m Leoni Dacar 302 cable interconnect.

# PoC Filter Solution – SMD-POC-070

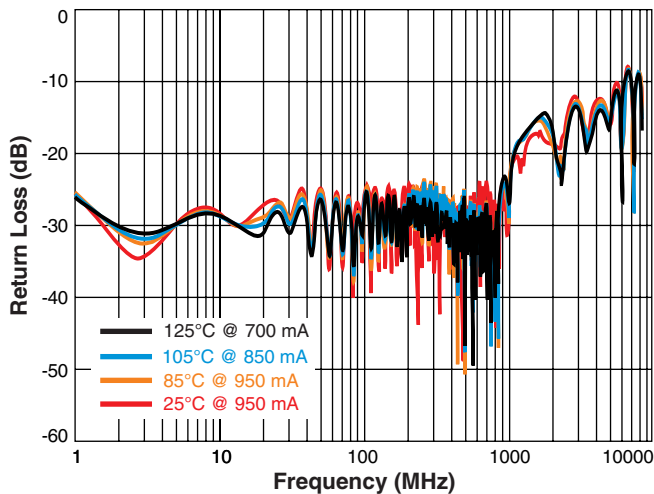
**Return Loss (S11, Single board no current)**



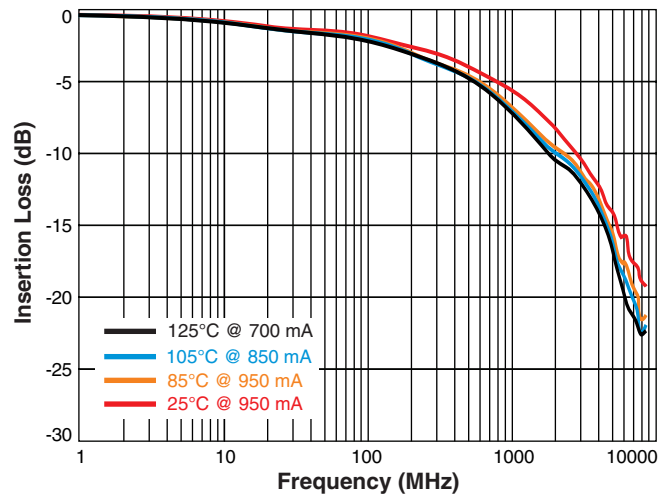
**Insertion Loss (S21, Single board no current)**



**Return Loss (S11, Total Channel Measurements\*)**



**Insertion Loss (S21, Total Channel Measurements\*)**



\* Solutions measured in a total channel configuration. 2 PCB's with PoC filters on each with a 8.5 m Leoni Dacar 302 cable interconnect.

**COILCRAFT CONFIDENTIAL**