

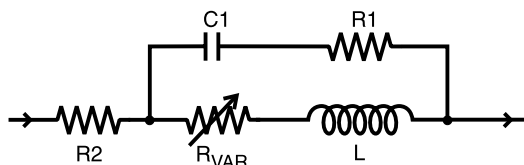
# SPICE Model – 0805HQ

This lumped-element (SPICE) model data simulates the frequency-dependent behavior of Coilcraft RF surface mount inductors from 1 MHz to the upper frequency limit shown in the accompanying table.

The equivalent lumped element model schematic is shown below. The element values R1, R2, C, and L are listed for each component value. The value of the frequency-dependent variable resistor  $R_{VAR}$  relates to the skin effect and is calculated from:

$$R_{VAR} = k * \sqrt{f}$$

- k is shown for each value in the accompanying table.
- f is the frequency in Hz



The data represents de-embedded measurements, as described below. Effects due to different customer circuit board traces, board materials, ground planes or interactions with other components are not included and can have a significant effect when comparing the simulation to measurements of the inductors using typical production verification instruments and fixtures.

Each model should only be analyzed at the input and output ports. Individual elements of the model are not determined by parameter measurement. The elements are determined by the overall performance of the lumped element model compared to the measurements taken of the component.

Typically, the Self-Resonant Frequency (SRF) of the component model will be higher than the measurement of the component mounted on a circuit board. The parasitic reactive elements of a circuit board or fixture will effectively lower the circuit resonant frequency, especially for very small inductance values. Since data sheet specifications are based on typical production measurements, and the SPICE models are based on de-embedded measurements as described below, the model results may be different from the data sheet specifications.

## Lumped Element Modeling Method

The measurements were made over a brass ground plane with each component centered over an air gap, as illustrated in Figure 1. The gap width for each size component is given in Table 1. The test pads were 30 mil

Table 1. Test Gap

Size	Gap Width (inch / mm)
0302	0.017 / 0.432
0402,0403	0.017 / 0.432
0603	0.026 / 0.660
0805	0.040 / 1.016
1008	0.060 / 1.524
1206	0.080 / 2.032
1812	0.120 / 3.048

(50 Ohm) wide traces of tinned gold over 25 mil thick alumina, and were not included in the gap. The TRL\* calibration plane is also illustrated in Figure 1.

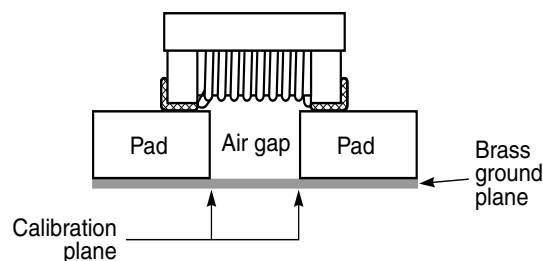


Figure 1. Test Setup

The lumped element values were determined by matching the simulation model to an average of the measurements. This method results in a model that represents as closely as possible the typical frequency-dependent behavior of the component up to a frequency just above the self-resonant frequency of the model.

The lumped element models were used to generate our 2-port S-parameters and therefore give identical results. The S-parameters are available on our web site at <http://www.coilcraft.com/models.cfm>.

## Disclaimer

Coilcraft makes every attempt to provide accurate measurement data and software, representative of our components, in a usable format. Coilcraft, however, disclaims all warrants relating to the use of its data and software, whether expressed or implied, including without limitation any implied warranties of merchantability or fitness for a particular purpose. Coilcraft cannot and will not be liable for any special, incidental, consequential, indirect or similar damages occurring with the use of the data and/or software.

**Coilcraft**<sup>®</sup>

Specifications subject to change without notice. Document 158-1 Revised 03/16/09

1102 Silver Lake Road Cary, Illinois 60013 Phone 847/639-6400 Fax 847/639-1469

E-mail [info@coilcraft.com](mailto:info@coilcraft.com) Web <http://www.coilcraft.com>

# SPICE Model for Coilcraft 0805HQ Chip Inductors

Part number	R1 ( $\Omega$ )	R2 ( $\Omega$ )	C (pF)	L (nH)	k	Upper limit (MHz)
0805HQ-2N5	6	0.02	0.029	2.70	6.90E-06	19800
0805HQ-5N6	7	0.04	0.044	5.80	1.19E-05	11000
0805HQ-6N2	8	0.04	0.056	6.40	1.15E-05	10100
0805HQ-12N	10	0.05	0.090	12.20	2.50E-05	5800
0805HQ-16N	11	0.06	0.064	16.50	2.62E-05	5900
0805HQ-18N	12	0.06	0.079	18.60	2.83E-05	5000
0805HQ-20N	11	0.06	0.128	20.50	3.38E-05	3800
0805HQ-27N	14	0.07	0.093	27.0	4.34E-05	3900
0805HQ-30N	12	0.10	0.137	30.0	4.58E-05	3000
0805HQ-39N	13	0.11	0.117	39.0	6.29E-05	2900
0805HQ-48N	13	0.10	0.116	48.0	7.59E-05	2600
0805HQ-51N	11	0.12	0.116	51.0	8.80E-05	2500



Specifications subject to change without notice. Document 158-8 Revised 11/13/02

1102 Silver Lake Road Cary, Illinois 60013 Phone 847/639-6400 Fax 847/639-1469  
 E-mail [info@coilcraft.com](mailto:info@coilcraft.com) Web <http://www.coilcraft.com>