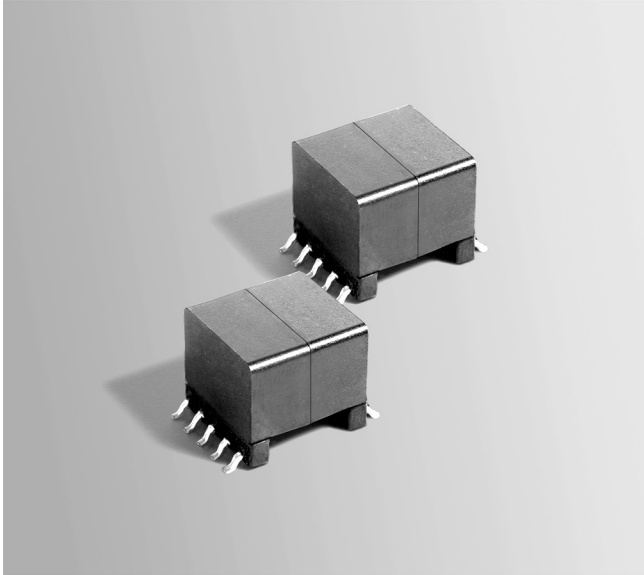


Flyback Transformer

For TI TPS55340
DC-DC Regulator



- Developed for Texas Instruments TPS55340 Boost/SEPIC/Flyback DC-DC Regulator
- Designed to operate at 200 kHz with 2.9–32 Volts input
- 1500 Vrms, one minute isolation from primary windings to secondary windings

Core material Ferrite

Terminations RoHS tin-silver over tin over nickel over phos bronze. Other terminations available at additional cost.

Weight 6.5 g

Ambient temperature –40°C to +85°C

Storage temperature Component: –40°C to +85°C.

Tape and reel packaging: –40°C to +80°C

Resistance to soldering heat Max three 40 second reflows at +260°C, parts cooled to room temperature between cycles

Moisture Sensitivity Level (MSL) 1 (unlimited floor life at <30°C / 85% relative humidity)

Failures in Time (FIT) / Mean Time Between Failures (MTBF)

38 per billion hours / 26,315,789 hours, calculated per Telcordia SR-332

Packaging 175 per 13" reel Plastic tape: 32 mm wide, 0.6 mm thick, 28 mm pocket spacing, 12.93 mm pocket depth

PCB washing Tested with pure water or alcohol only. For other solvents, see Doc787_PCB_Washing.pdf

Part number ¹	Power (W)	Inductance at 0 A ² ±10% (µH)	Inductance at I _{pk} ³ min (µH)	DCR max (Ohms) ⁴		Leakage inductance ⁵ max (µH)	Turns ratio ⁶ pri : sec	I _{pk} ³ (A)	Output ⁷
				pri	sec				
NA5889-AL_	12	12	10.8	0.03	0.0195	0.140	1 : 0.833	5.5	12 V, 1 A

1. When ordering, please specify **packaging** code:

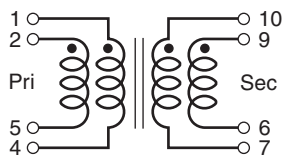
NA5889-ALD

Packaging: D = 13" machine-ready reel. EIA-481 embossed plastic tape (175 parts per full reel). Quantities less than full reel available: in tape (not machine ready) or with leader and trailer (\$25 charge).

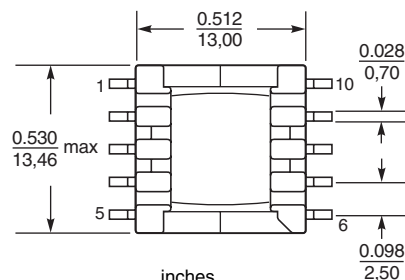
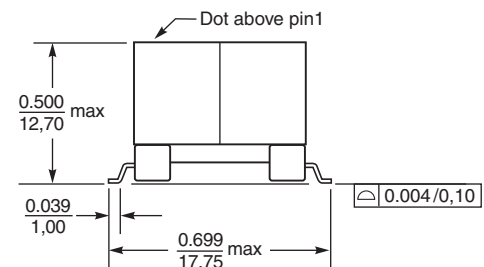
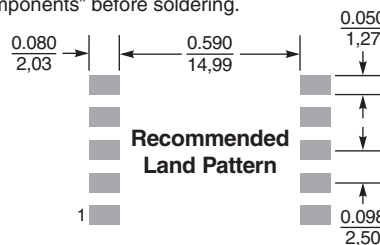
B = Less than full reel. In an effort to simplify our part numbering system, Coilcraft is eliminating the need for multiple packaging codes. When ordering, simply change the last letter of your part number from B to D.

2. Inductance measured at 200 kHz, 1.0 Vrms, 0 Adc.
3. Peak primary current drawn at minimum input voltage.
4. DCR for the primary and for the secondary is with windings connected in parallel.
5. Leakage inductance is for the primary and is measured with the secondary shorted.
6. Turns ratio is with the primary and the secondary windings connected in parallel.
7. Output of the secondary is with the windings connected in parallel.
8. Electrical specifications at 25°C.

Refer to Doc 362 "Soldering Surface Mount Components" before soldering.



Primary windings and secondary windings to be connected in parallel on PCB



Dimensions are in $\frac{\text{inches}}{\text{mm}}$



www.coilcraft.com

US +1-847-639-6400 sales@coilcraft.com
UK +44-1236-730595 sales@coilcraft-europe.com
Taiwan +886-2-2264 3646 sales@coilcraft.com.tw
China +86-21-6218 8074 sales@coilcraft.com.cn
Singapore + 65-6484 8412 sales@coilcraft.com.sg

Document 1110 Revised 12/02/20

© Coilcraft Inc. 2020

This product may not be used in medical or high risk applications without prior Coilcraft approval. Specification subject to change without notice. Please check web site for latest information.